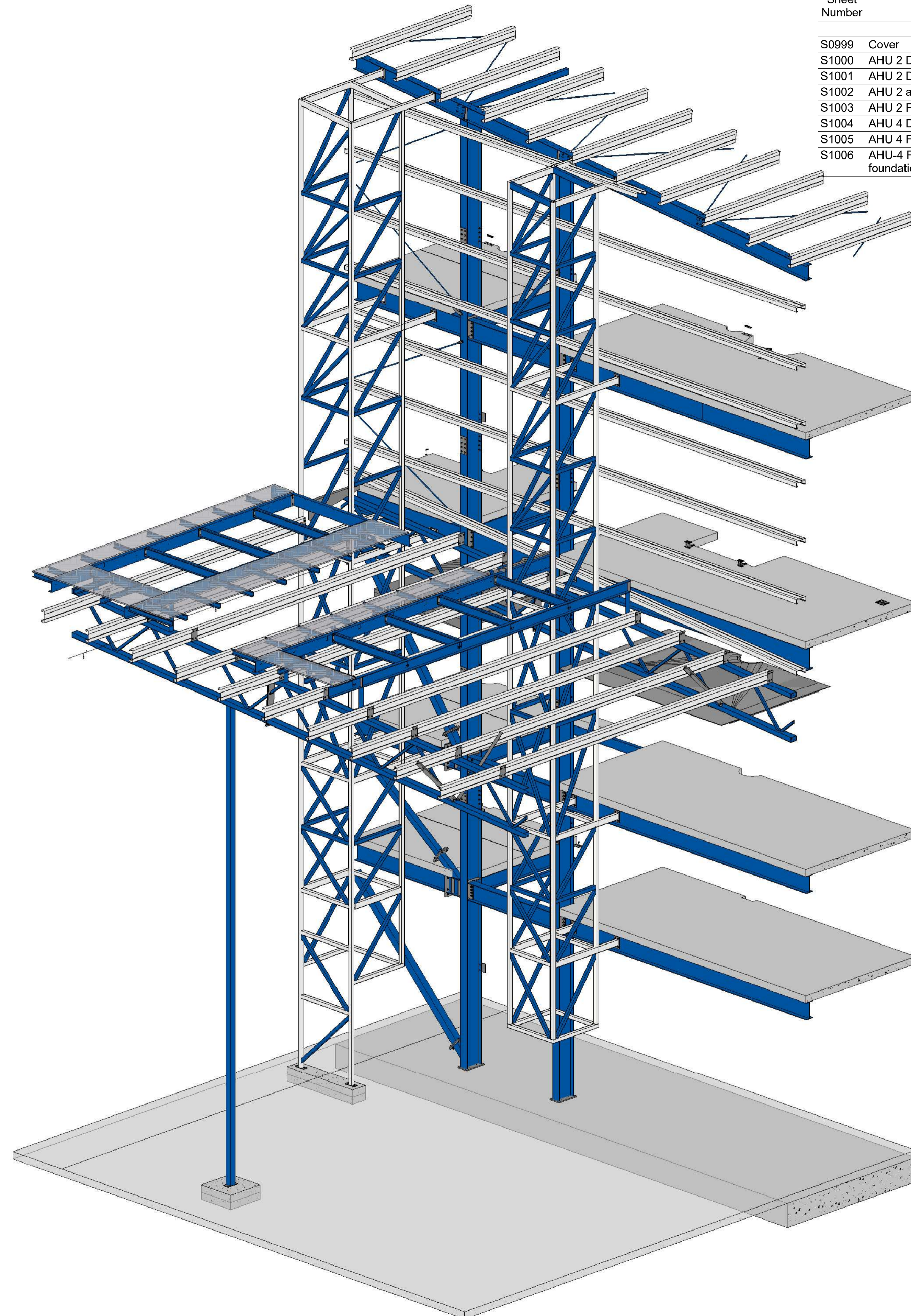
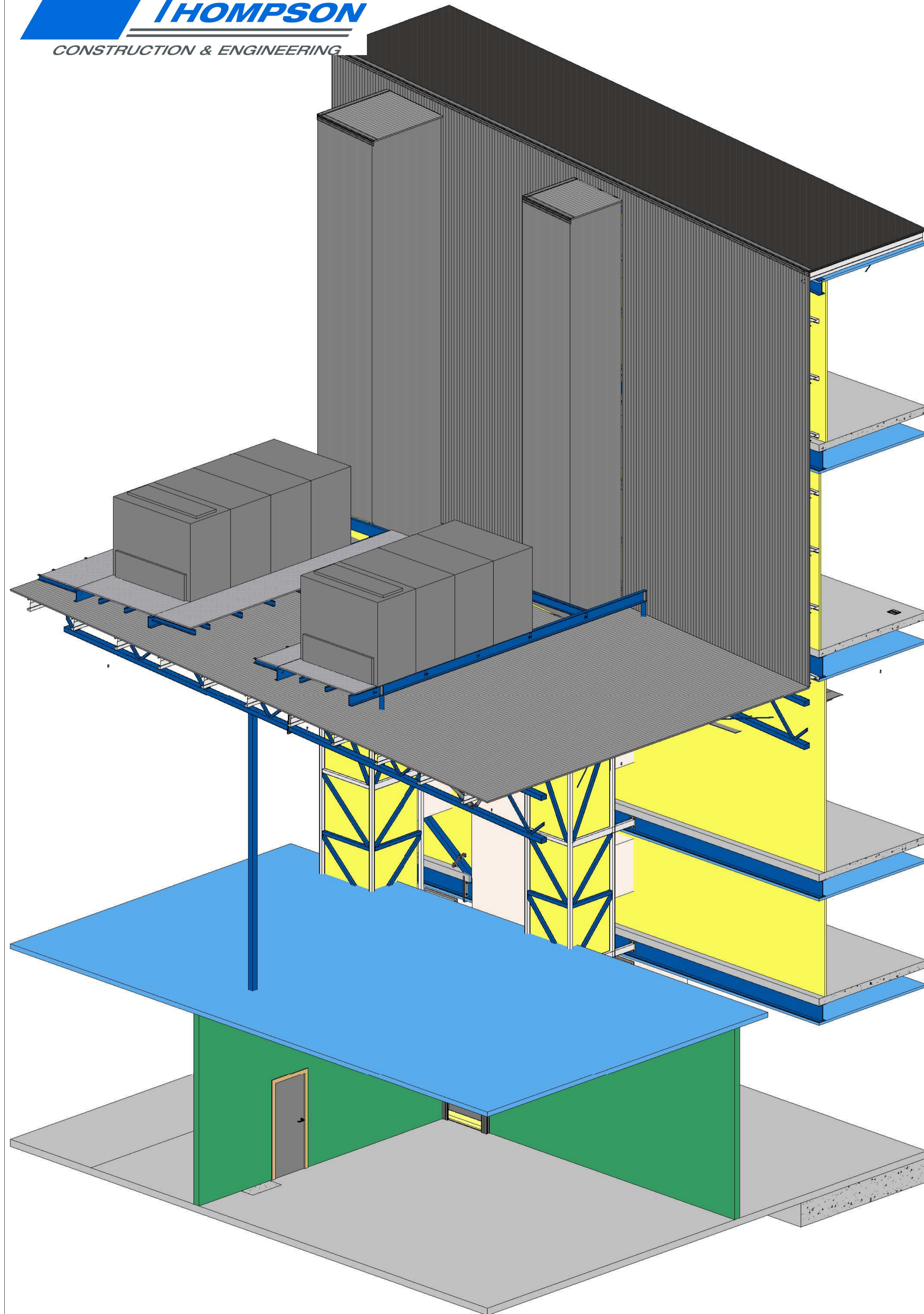
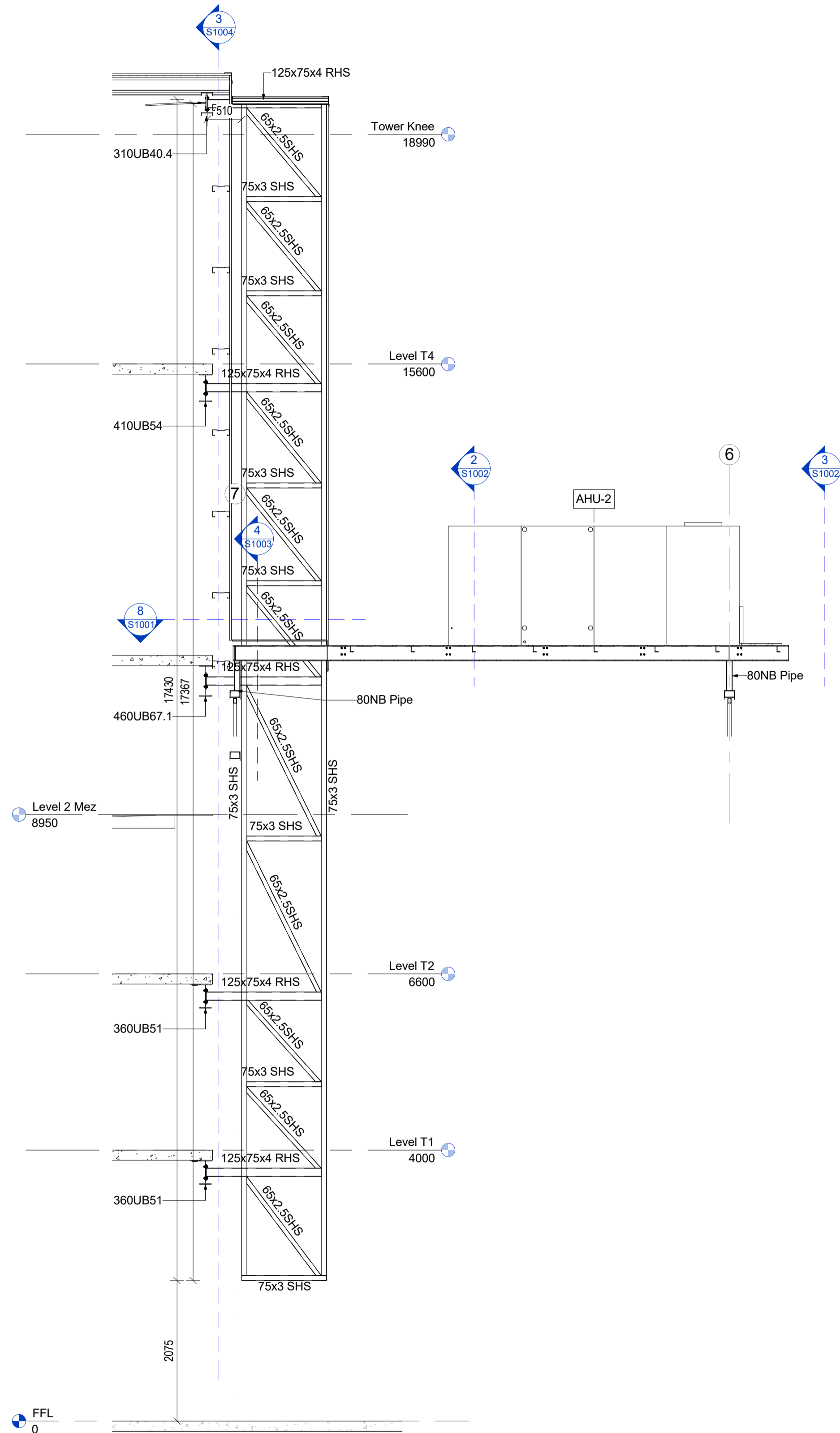


Sheet Number	Sheet Name	Current Revision	Current Revision Date
S0999	Cover	18	7/7/17
S1000	AHU 2 Ducting Frame	18	7/7/17
S1001	AHU 2 Ducting Frame Details	18	7/7/17
S1002	AHU 2 and 4 Frames	18	7/7/17
S1003	AHU 2 Frame Details	18	7/7/17
S1004	AHU 4 Ducting Frame	18	7/7/17
S1005	AHU 4 Frame Details	18	7/7/17
S1006	AHU-4 Floor plan and foundation details	18	7/7/17

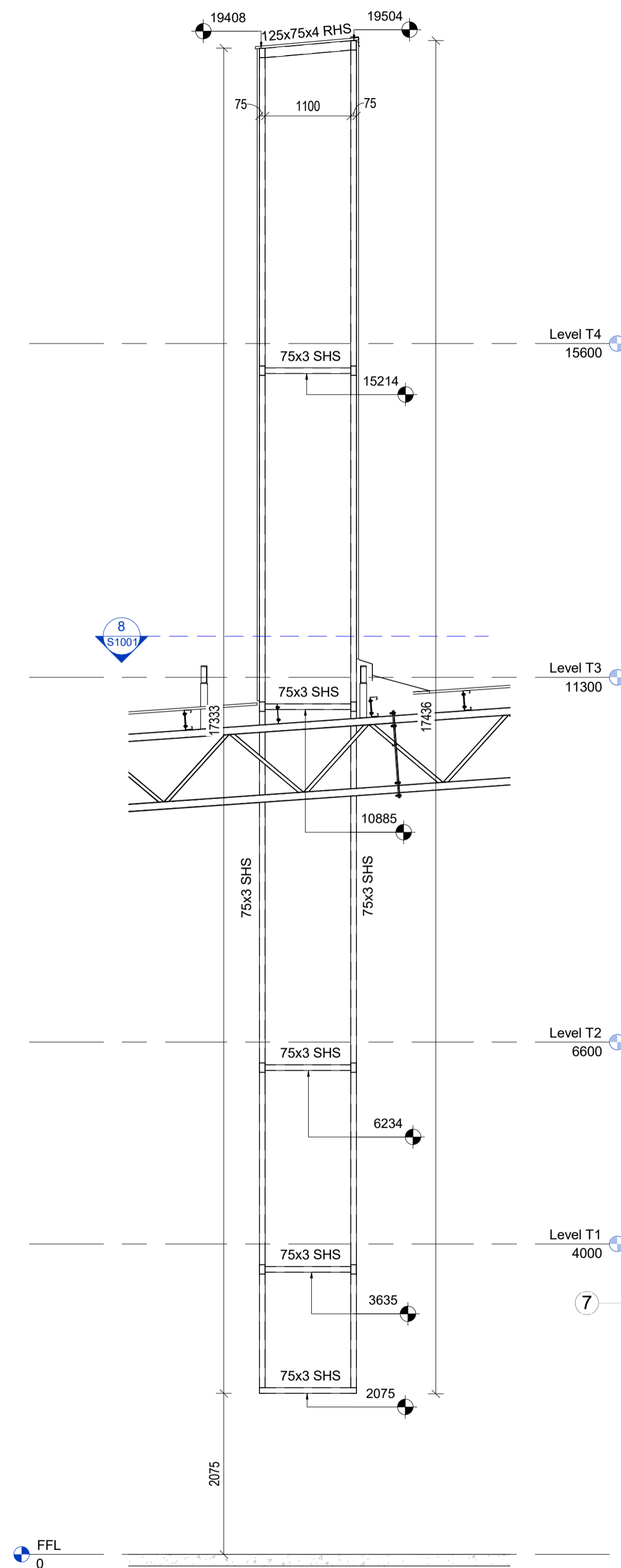
**PRELIMINARY**  
Subject to Structural Engineering  
and Building Consent



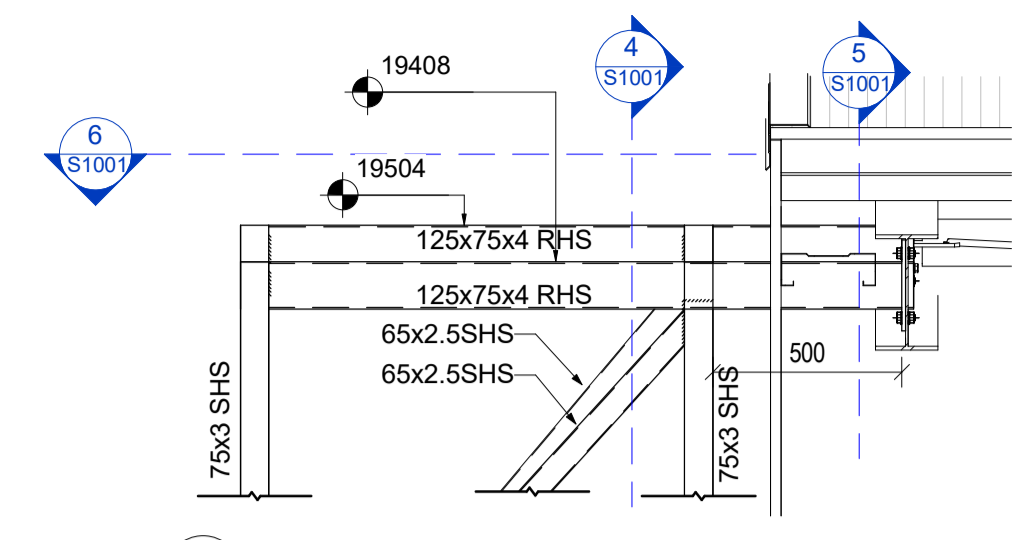




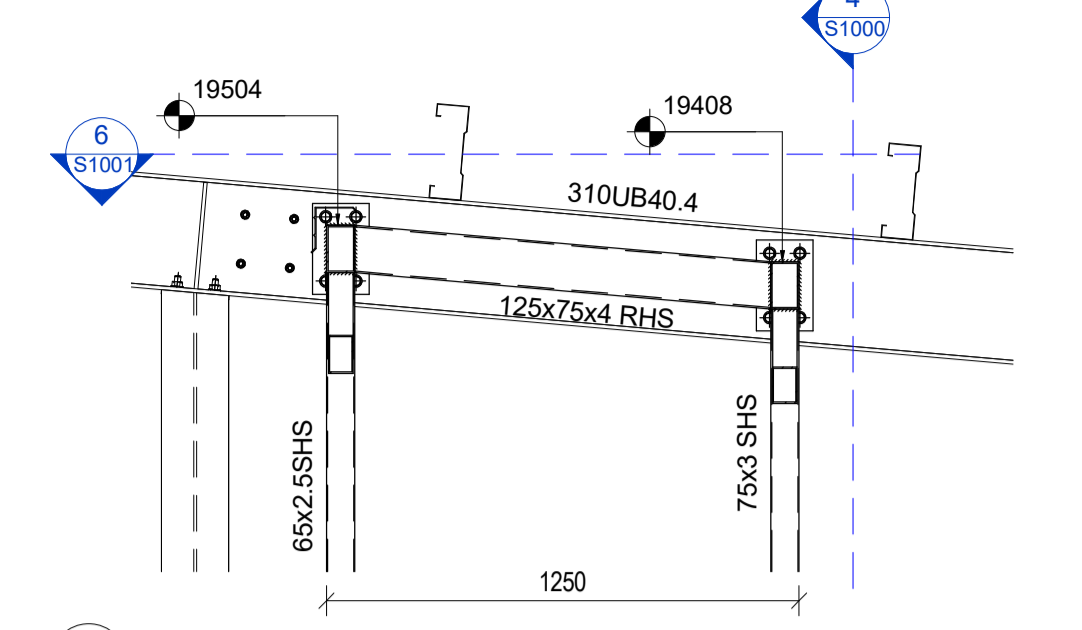
1 Duct frame side elevation  
1:50



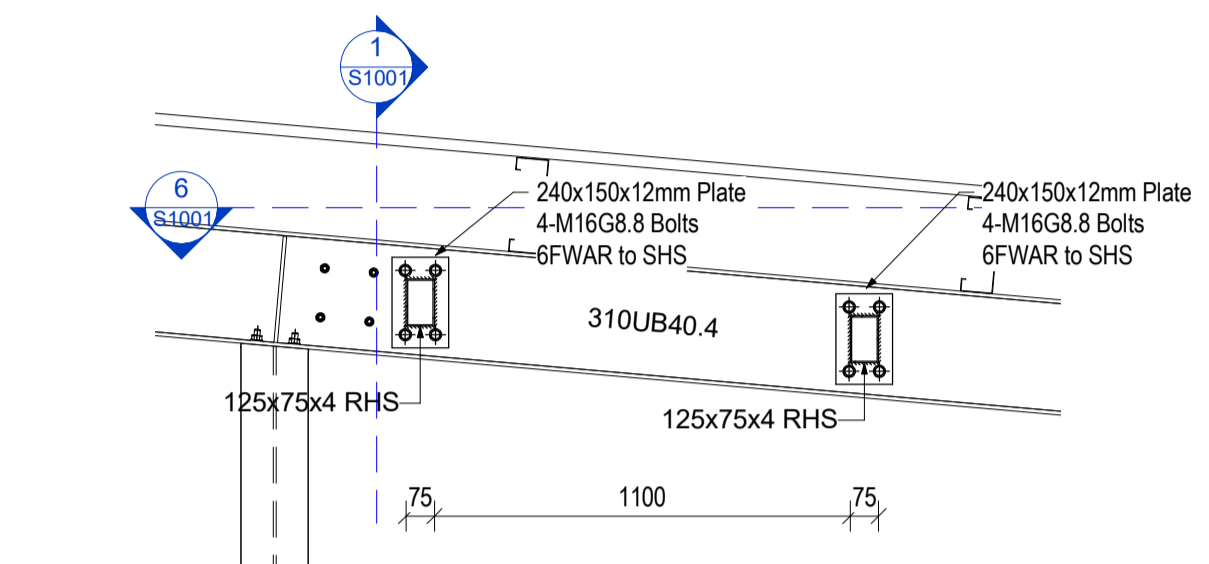
2 Duct frame Back Elevation  
1:50



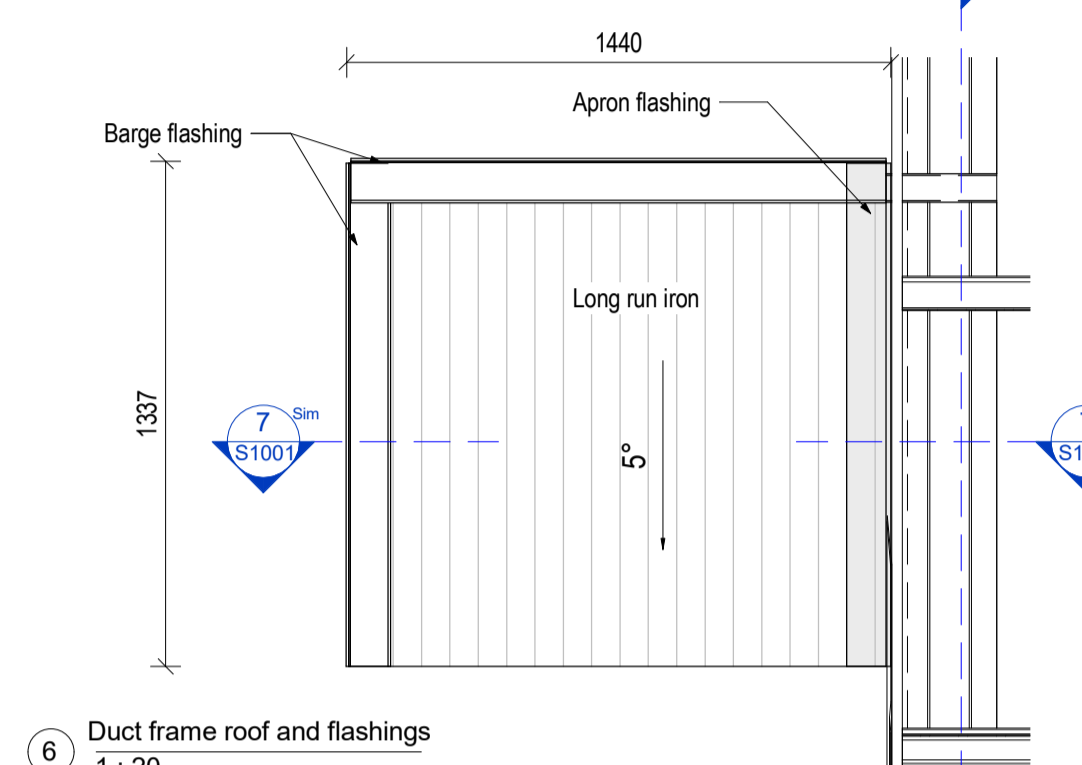
3 SECTION :Top of duct frame  
1:20



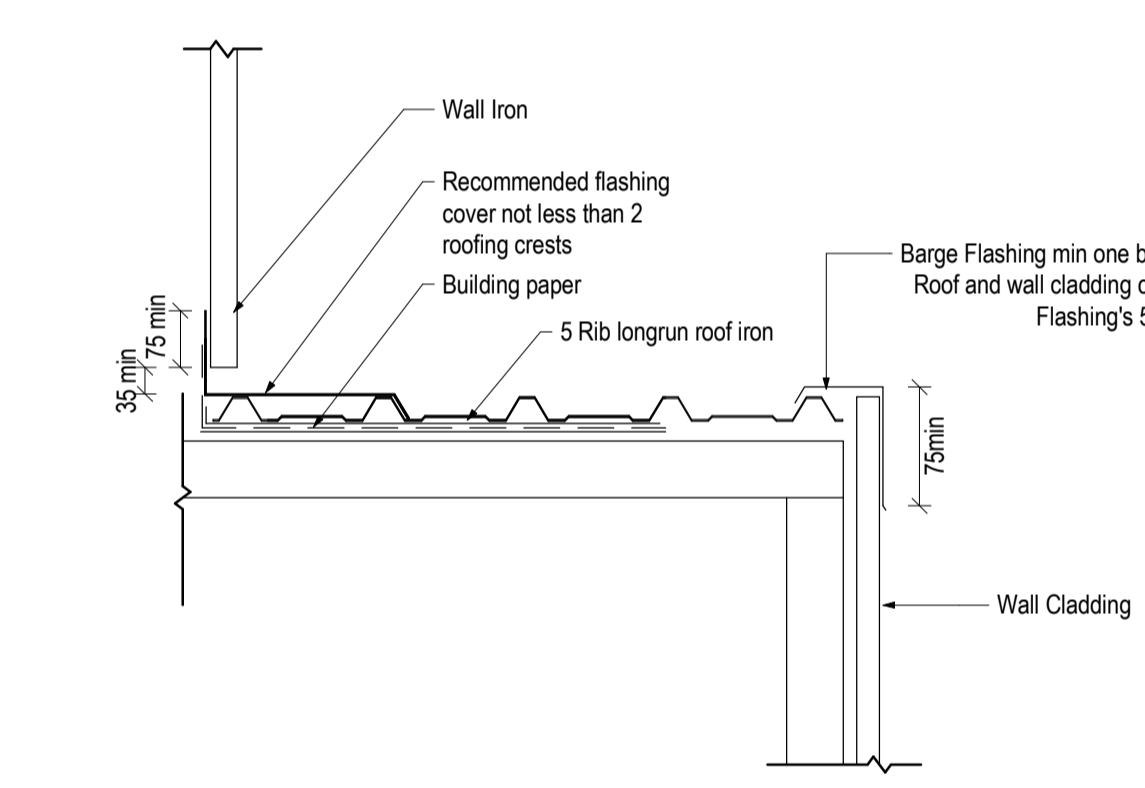
4 DETAIL :Top frame  
1:20



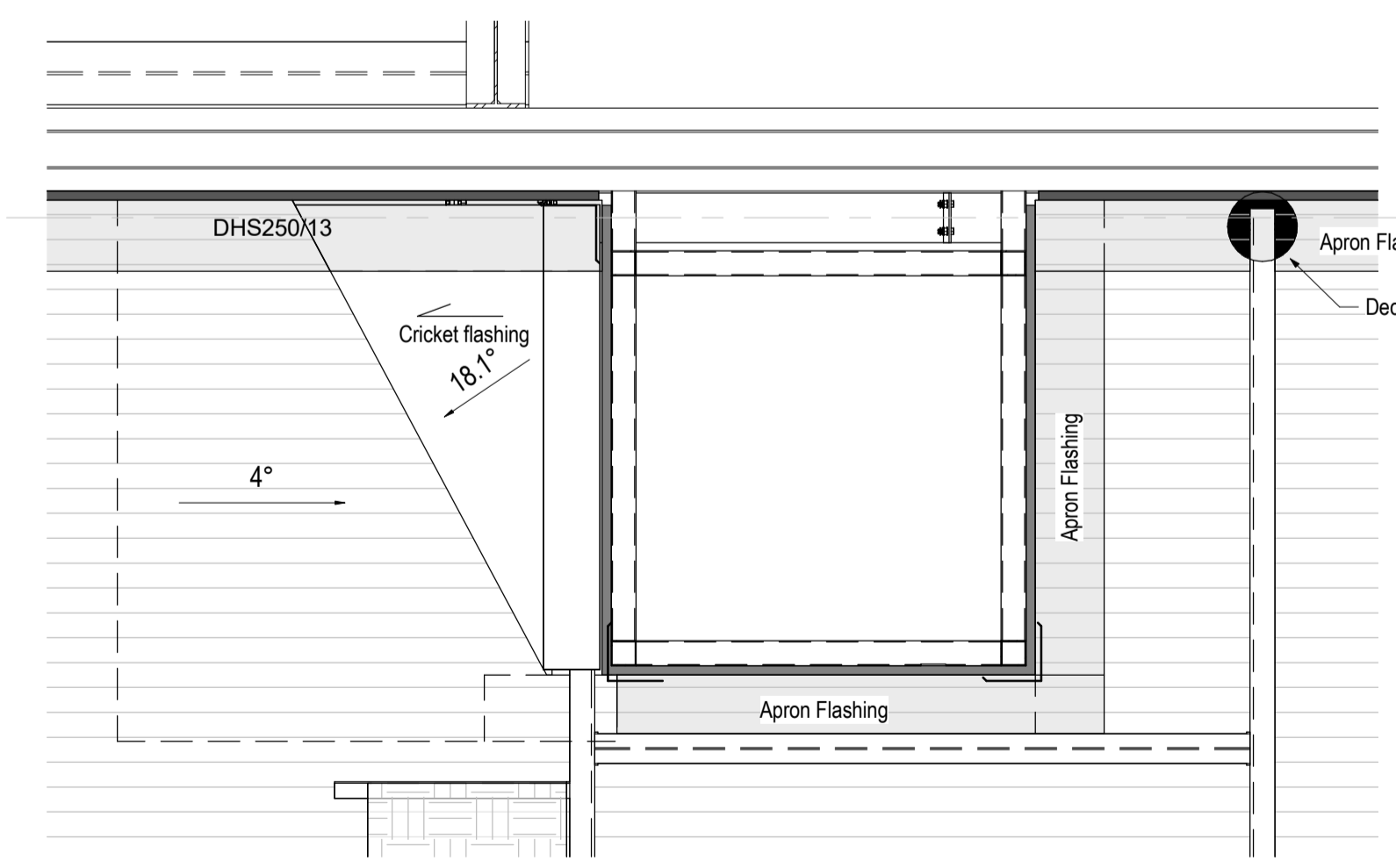
5 DETAIL :Top of duct frame connection  
1:20



6 Duct frame roof and flashings  
1:20



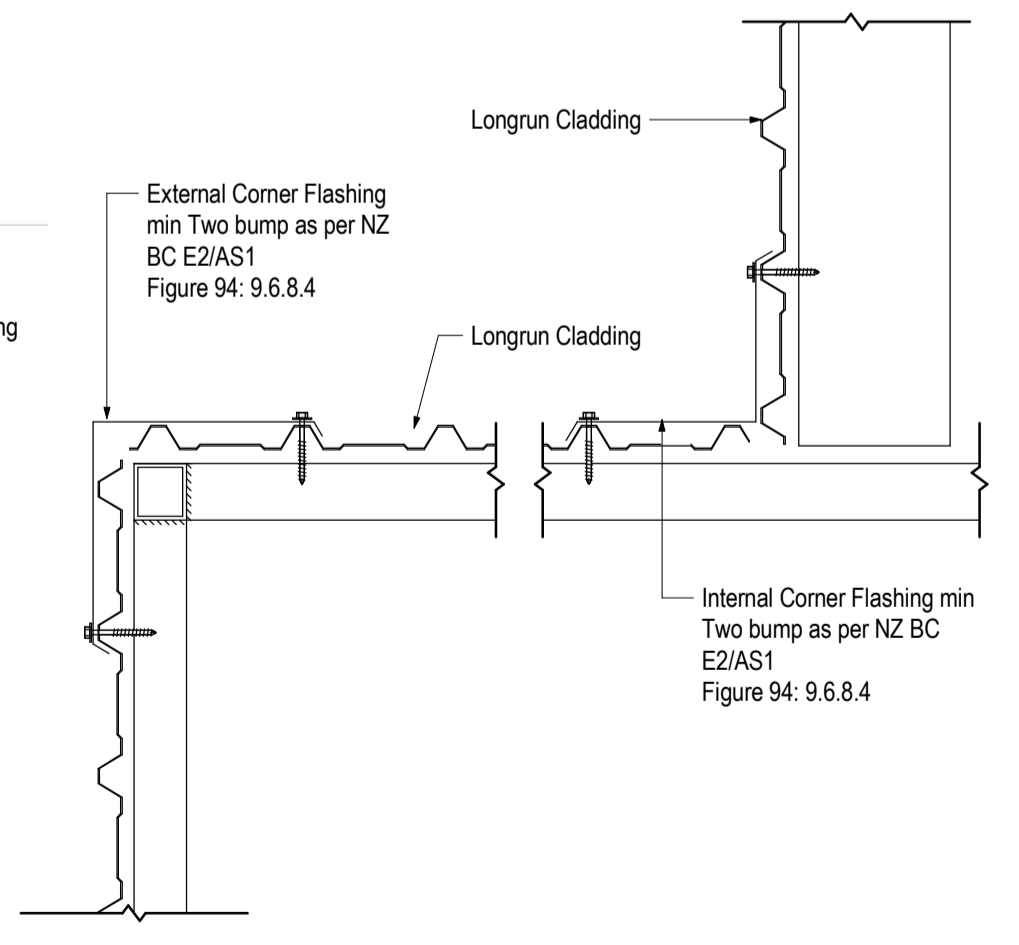
7 Barge and Apron Flashing Detail  
1:10



8 Duct Frame flashings  
1:20

**Figure 53: Flashing for small pipes**  
Paragraphs 8.3.10, 8.4.17, 9.6.8.5 and 9.6.9.6

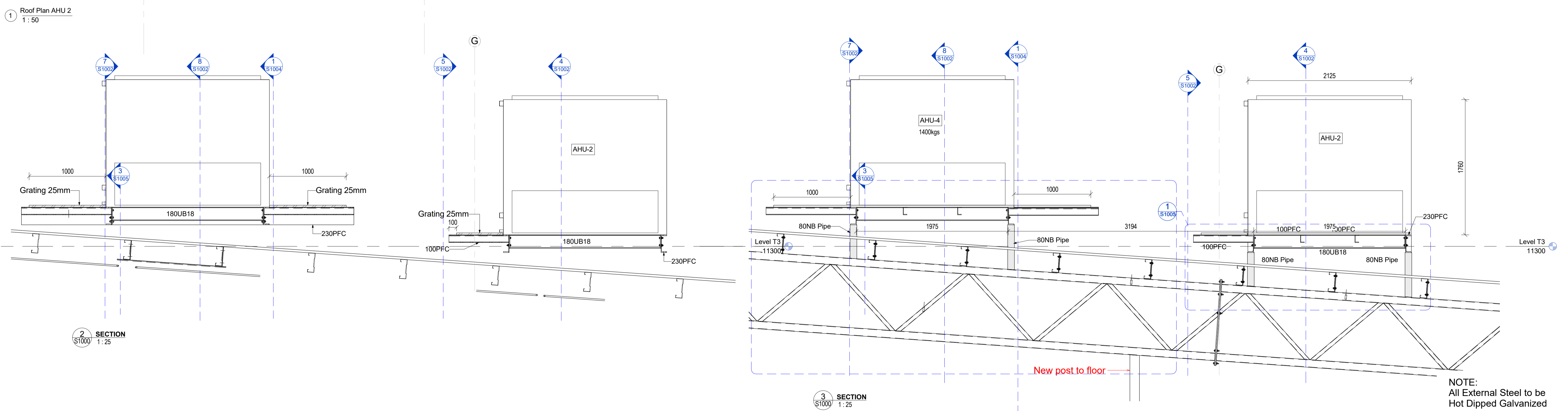
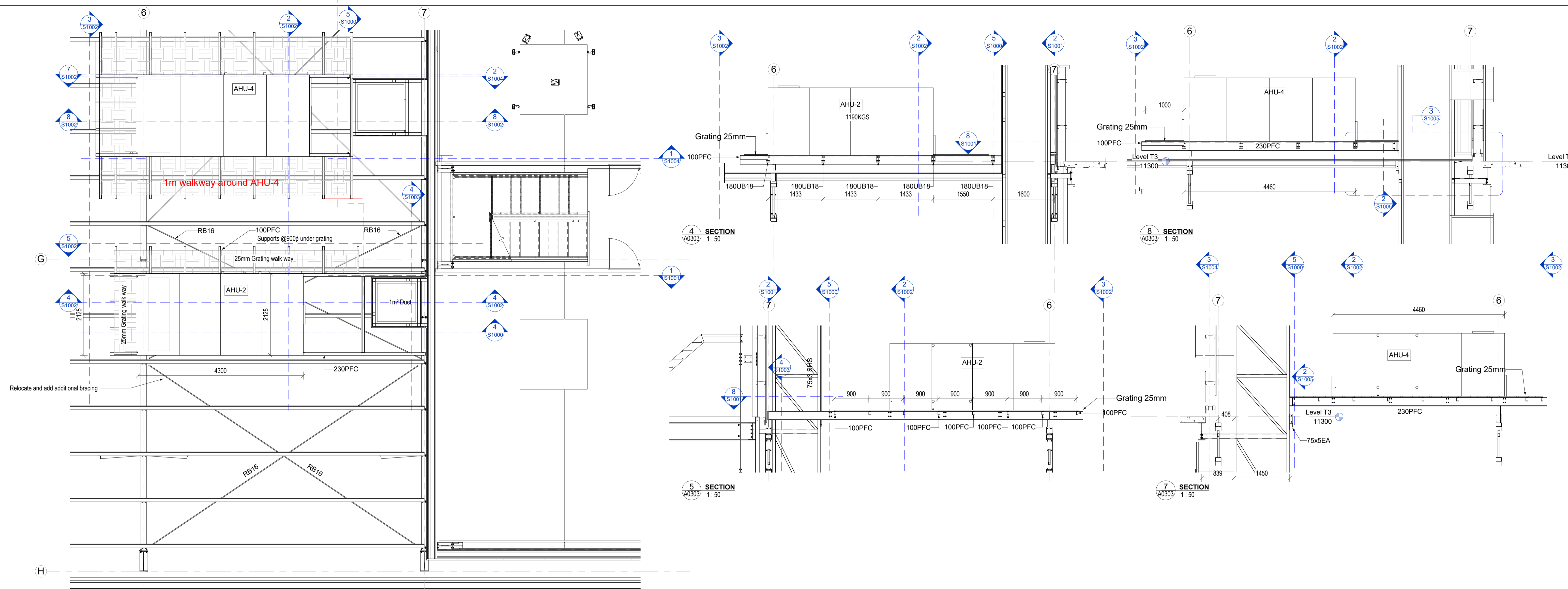
**NOTE:**  
(1) Max. roof pitch for this flashing 45°, minimum pitch 10° if base of flange covers one or more complete troughs.  
(2) For pipes up to 85 mm diameter.



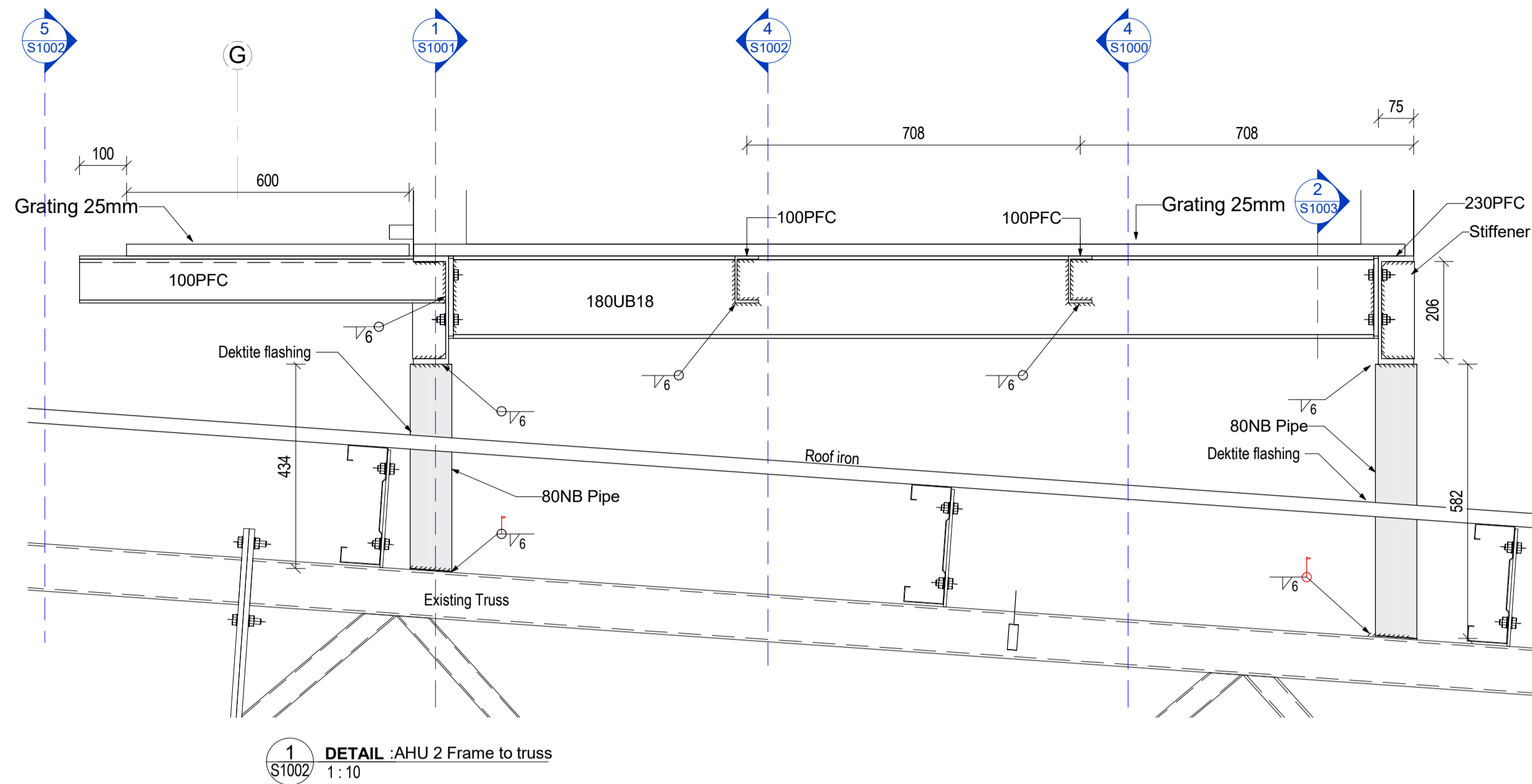
Corner Flashings for profiled metal  
1:10

Rev#	Amendments	Date
16	AHU-2 platform and Ducting	23/05/17
17	AHU-2 platform downsize of steel	31/05/17
18	AHU-4 Platform and Ducting	7/7/17

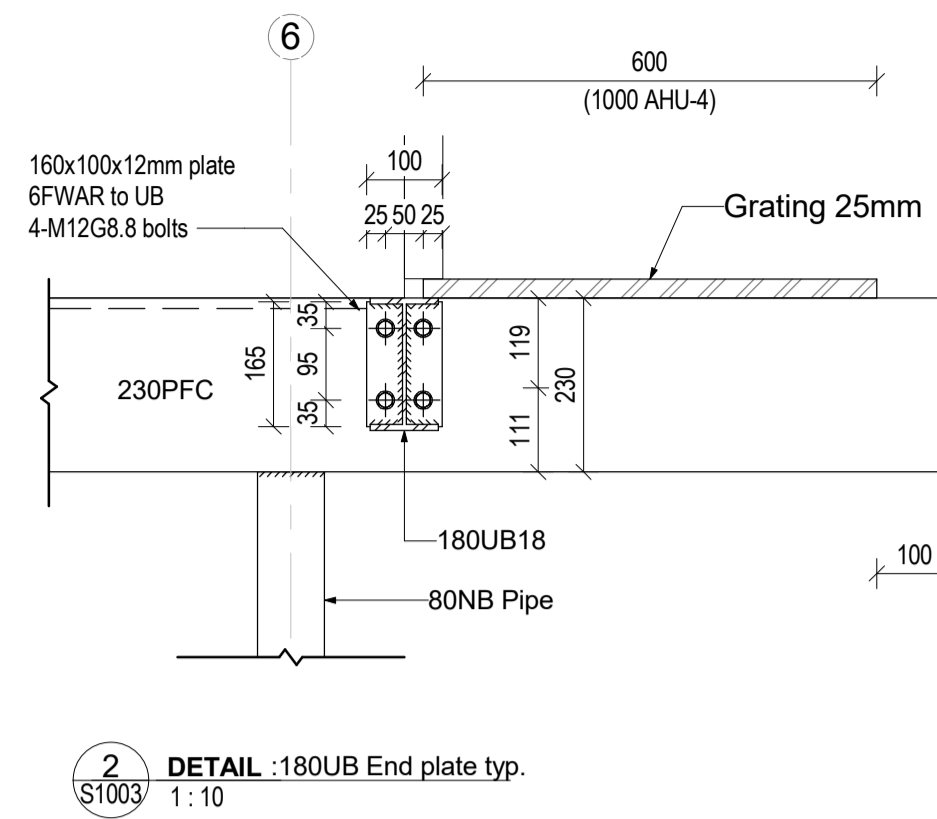
SCALE	As indicated	JOB #	12412
DRAWN BY	C. White	DATE	23/05/2017
CHECKED BY	R. Qadeer		18
AHU 2 Ducting Frame Details		S1001	
Please note: All dimensions to be verified on site			
Paper size <b>A1</b>			



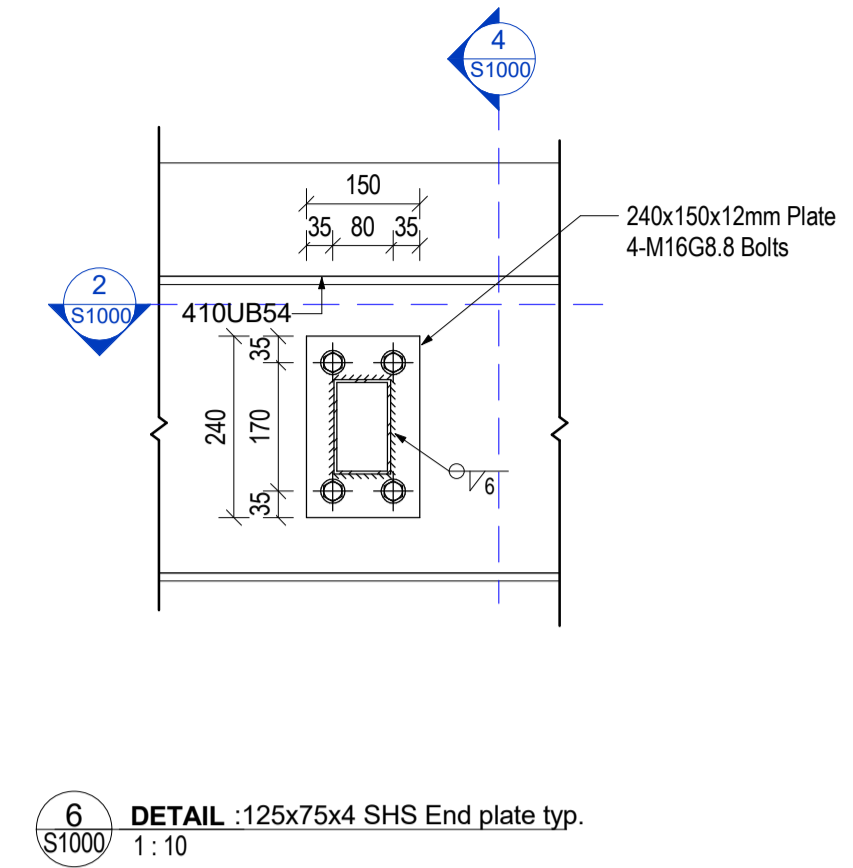
Rev#	Amendments	Date	SCALE	As indicated	JOB #	12412
16	AHU-2 platform and Ducting	23/05/17	DRAWN BY C. White	DATE 23/05/2017	CHECKED BY R. Qadeer	18
17	AHU-2 platform downsize of steel	31/05/17				
18	AHU-4 Platform and Ducting	7/7/17				
			AHU 2 and 4 Frames		S1002	
Please note: All dimensions to be verified on site						



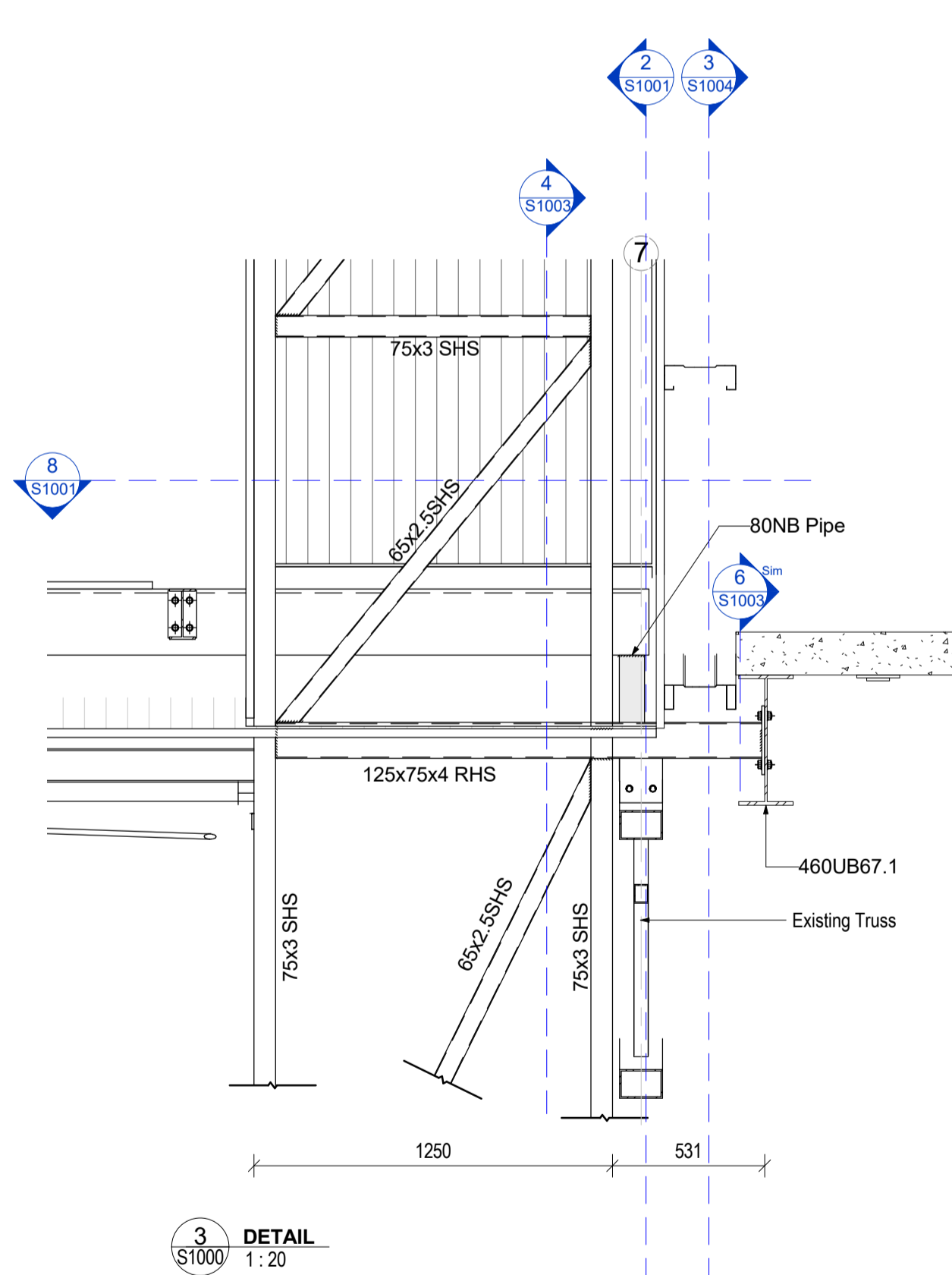
1 DETAIL :AHU 2 Frame to truss  
1:10



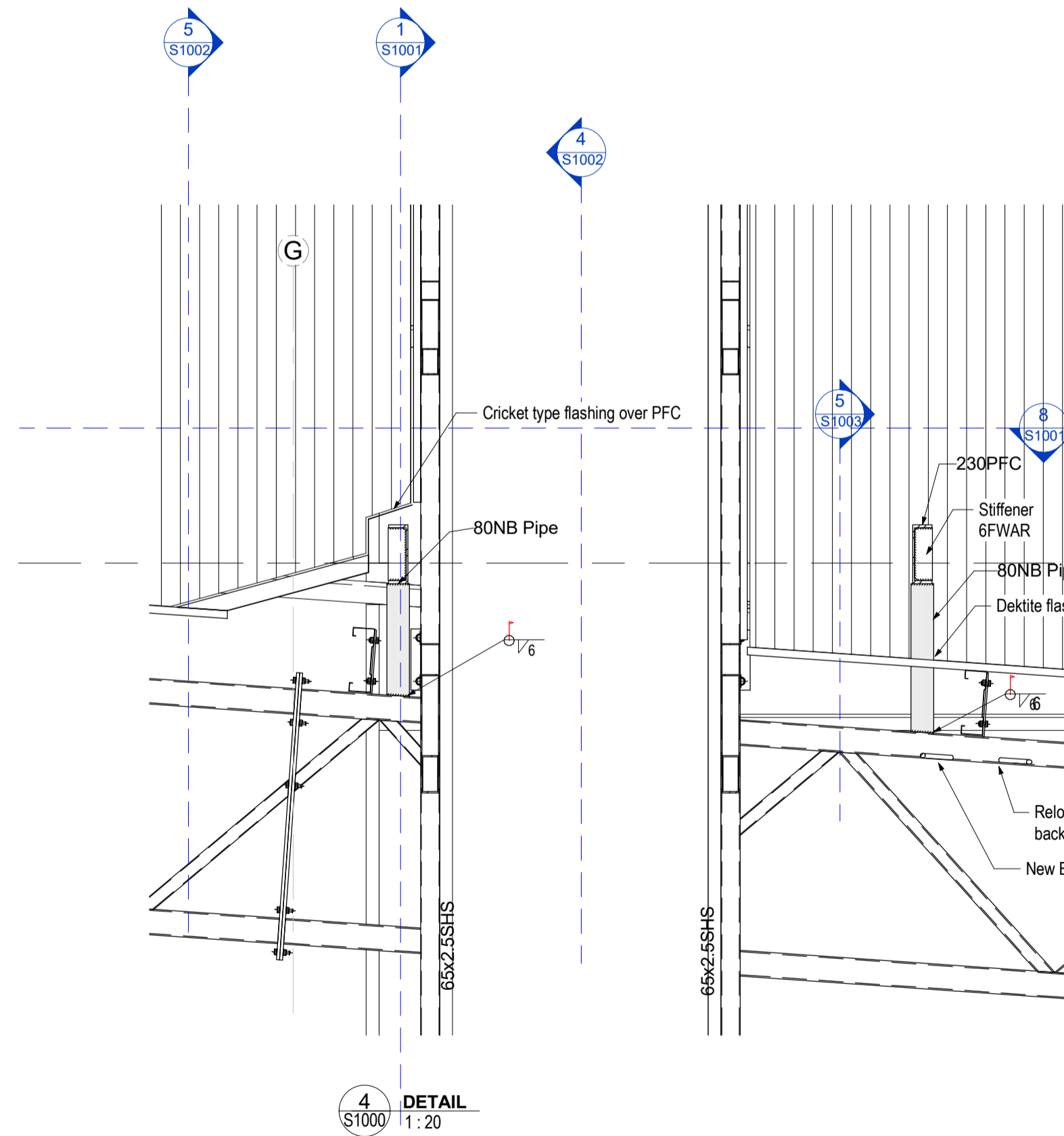
2 DETAIL :180UB End plate typ.  
1:10



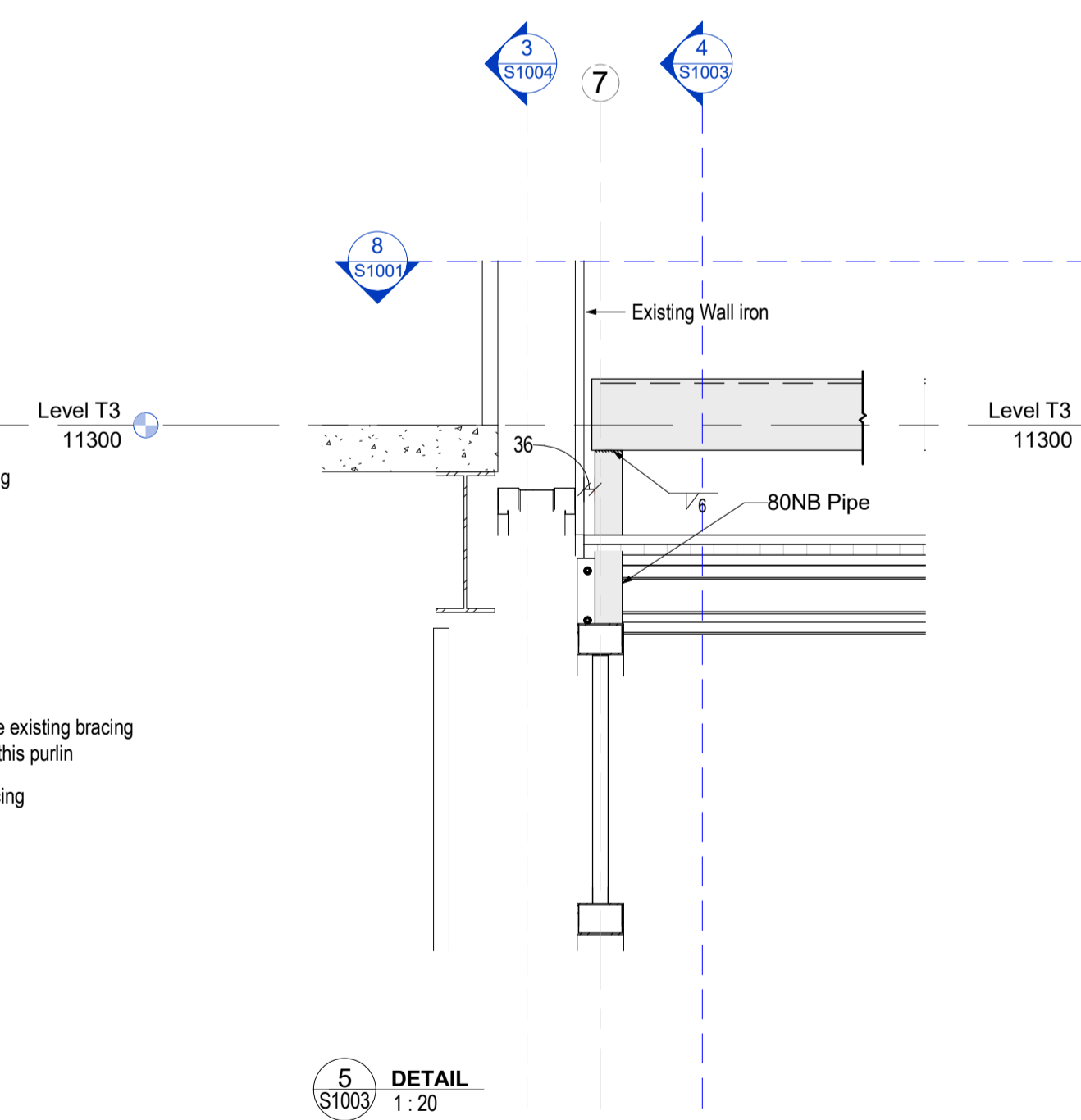
6 DETAIL :125x75x4 SHS End plate typ.  
1:10



3 DETAIL  
1:20



4 DETAIL  
1:20



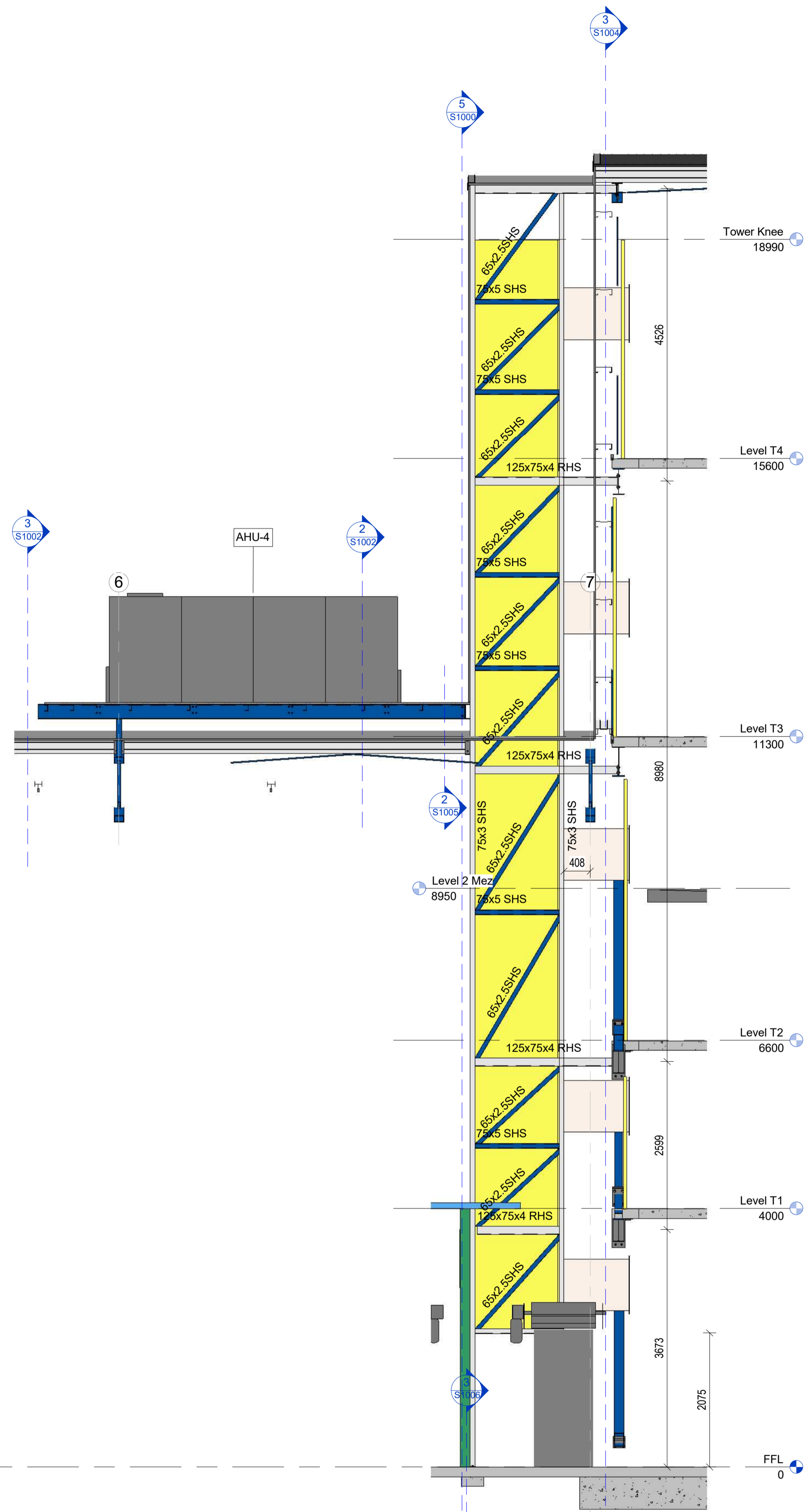
5 DETAIL  
1:20

AHU 2 Structural Column Schedule

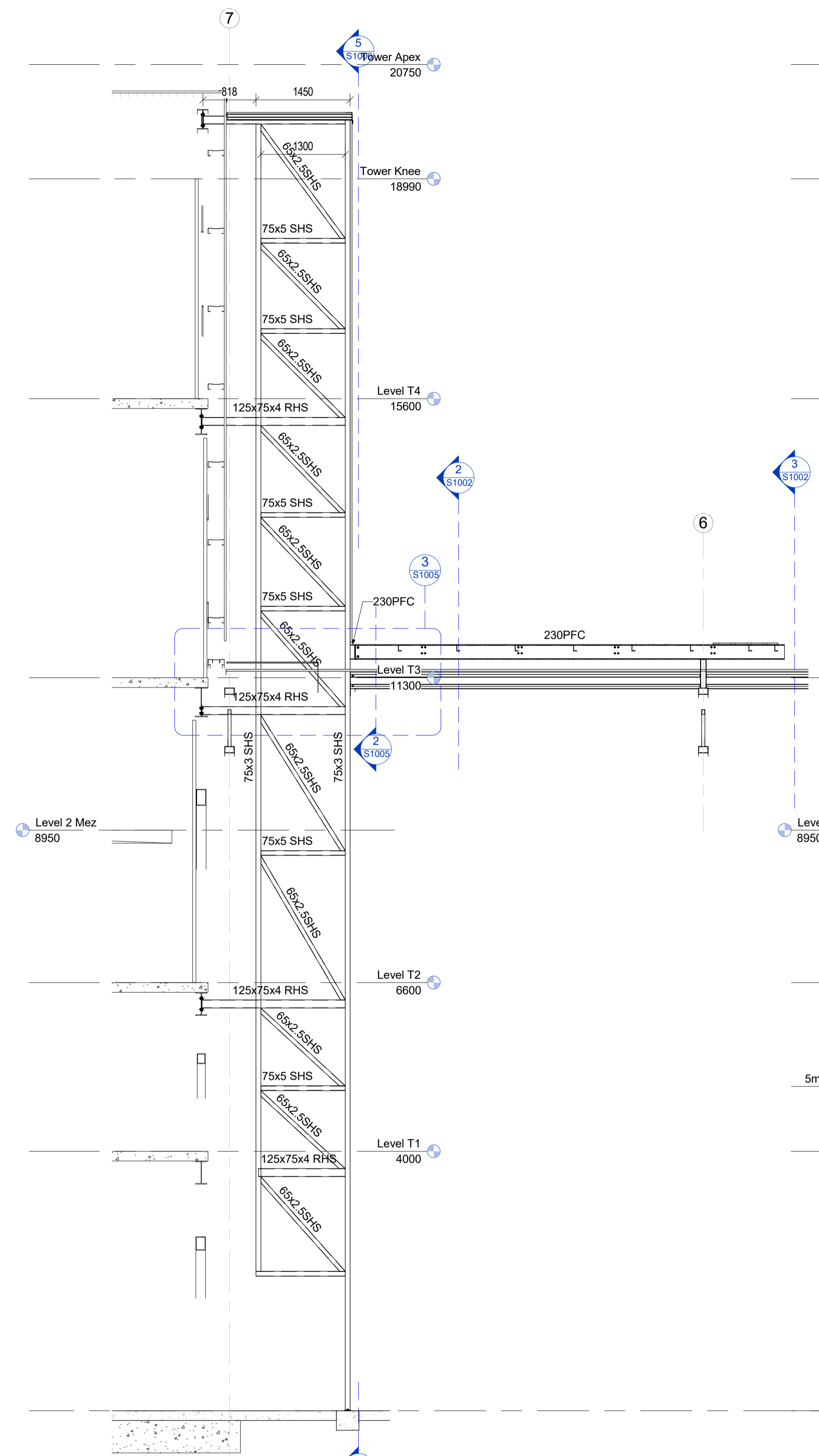
Type	Length	Volume	Weight (Kgs)
75x3 SHS	13039	0.01 m³	90.12
75x3 SHS	17354	0.01 m³	119.95
75x3 SHS	17258	0.01 m³	119.28
75x3 SHS	17354	0.01 m³	119.95
75x3 SHS	4094	0.00 m³	28.3
75x3 SHS	17564	0.02 m³	121.4
75x3 SHS	17685	0.02 m³	122.24
75x3 SHS	19960	0.02 m³	137.96
75x3 SHS	19839	0.02 m³	137.13
80NB Pipe	446	0.00 m³	4.57
80NB Pipe	586	0.00 m³	6.06
80NB Pipe	446	0.00 m³	4.59

AHU- 2 Structural Framing Schedule

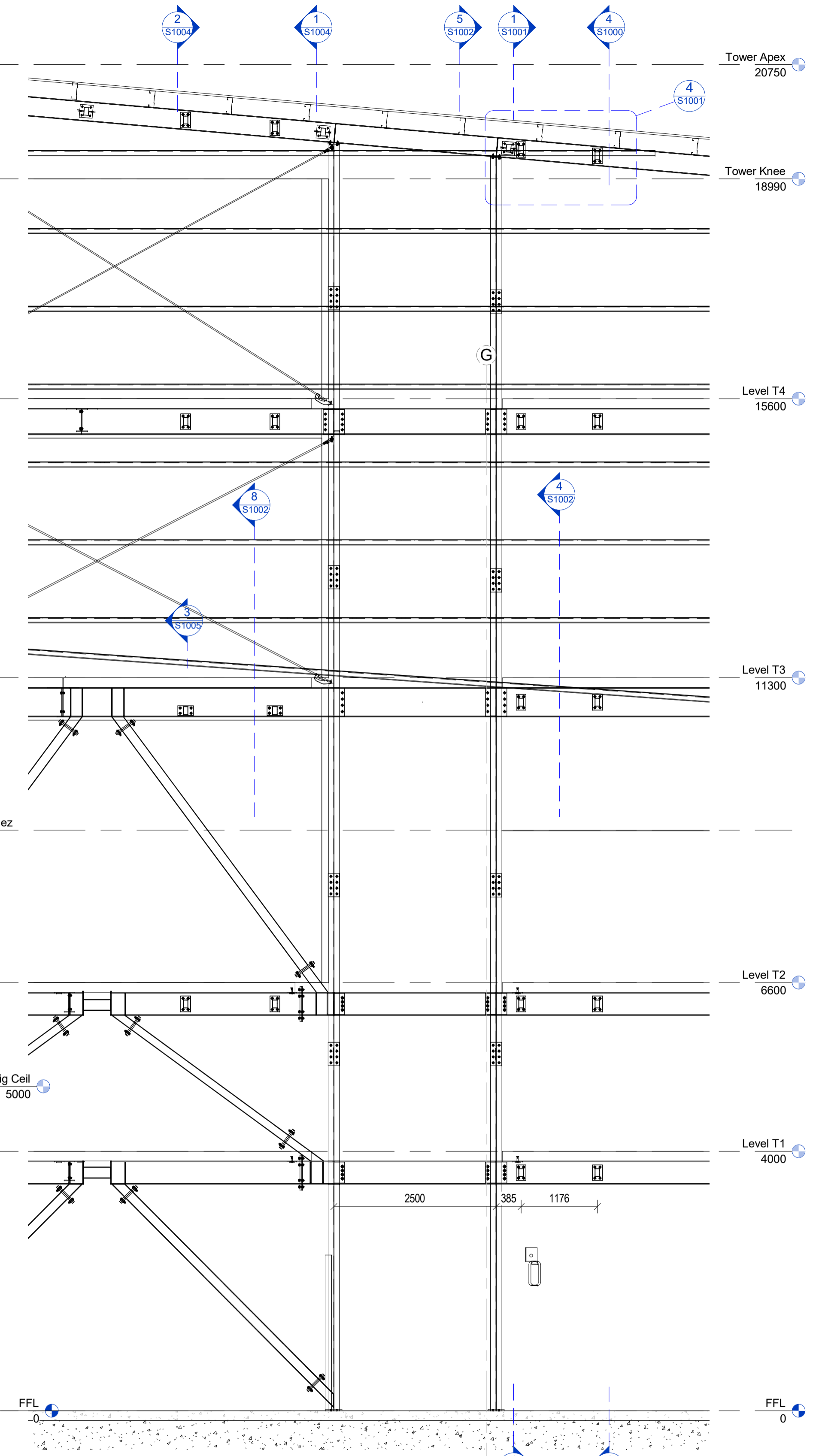
80NB Pipe Type	947	Cut Length	Volume	Weight (Kgs)
Grand total:	15	147961	0.13 m³	1028.34
65x2.5SHS	32	59677	0.00 m³	287.35
75x3 SHS	49	58400	0.00 m³	400.55
100PFC	28	28588	0.00 m³	230.96
125x75x4 RHS	24	42246	0.00 m³	518.58
180UB18	9	17755	0.00 m³	317.46
230PFC	5	33944	0.00 m³	852.39
Grand total:	147		240609	2607.29



1 AHU-4 Duct frame side elevation  
1:50

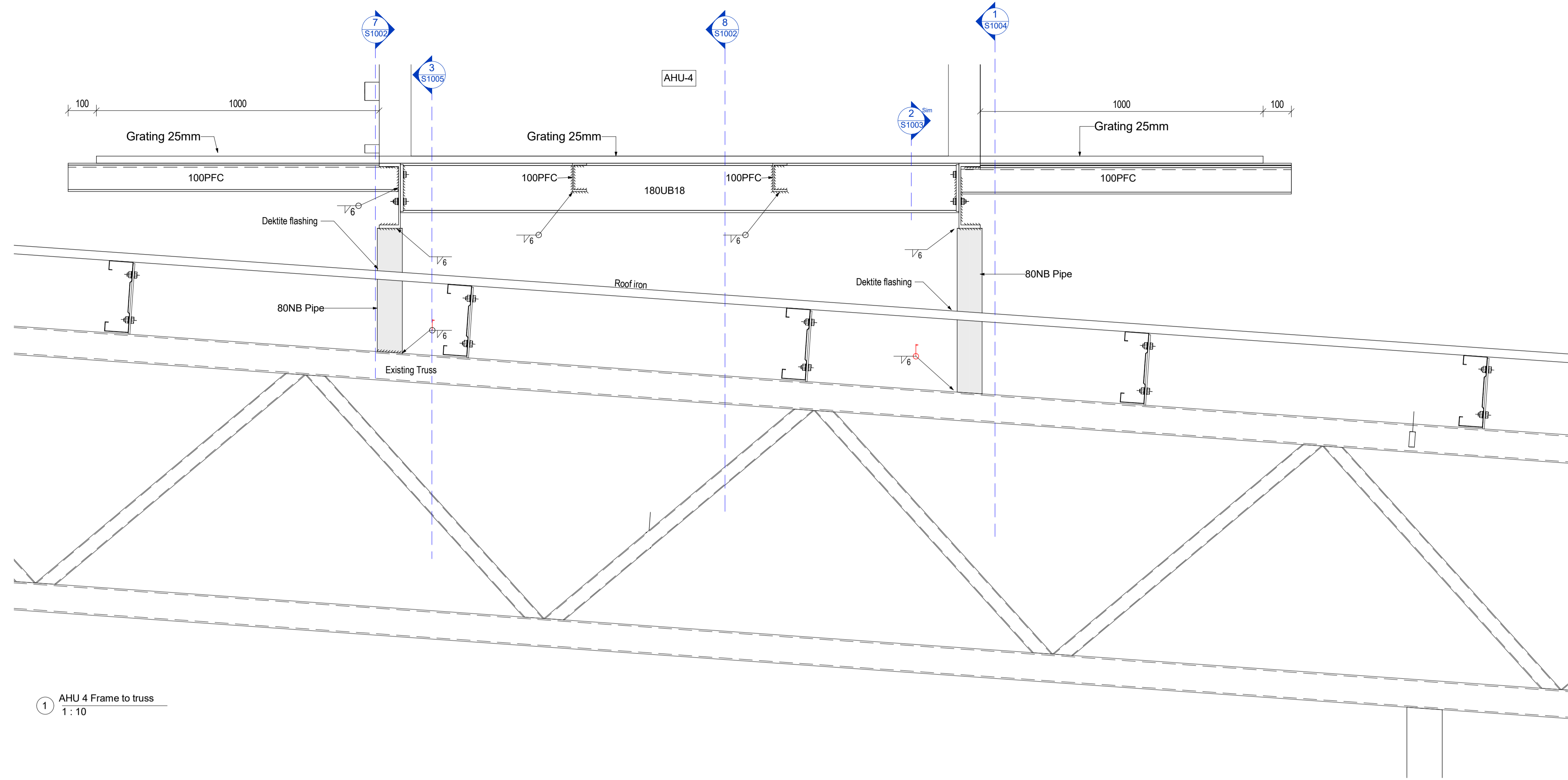


2 DETAIL :AHU-4 Duct frame side elevation1  
1:50

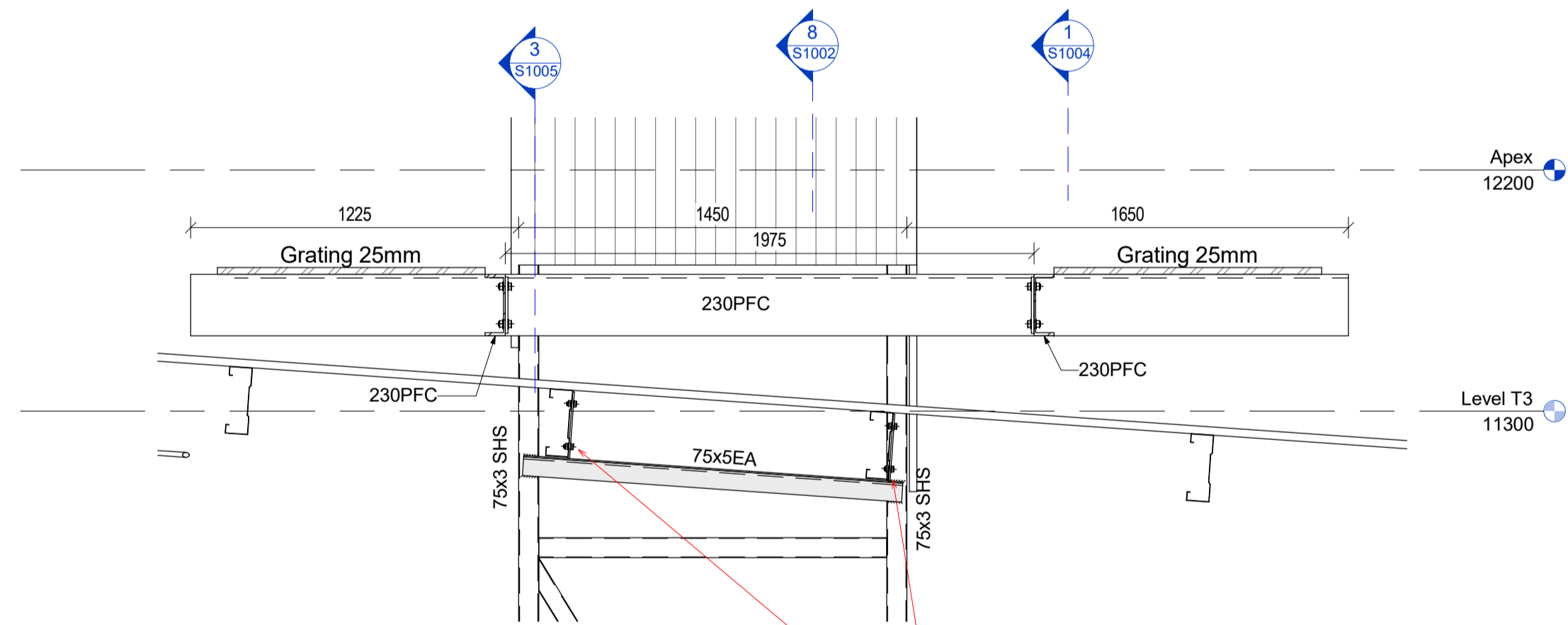
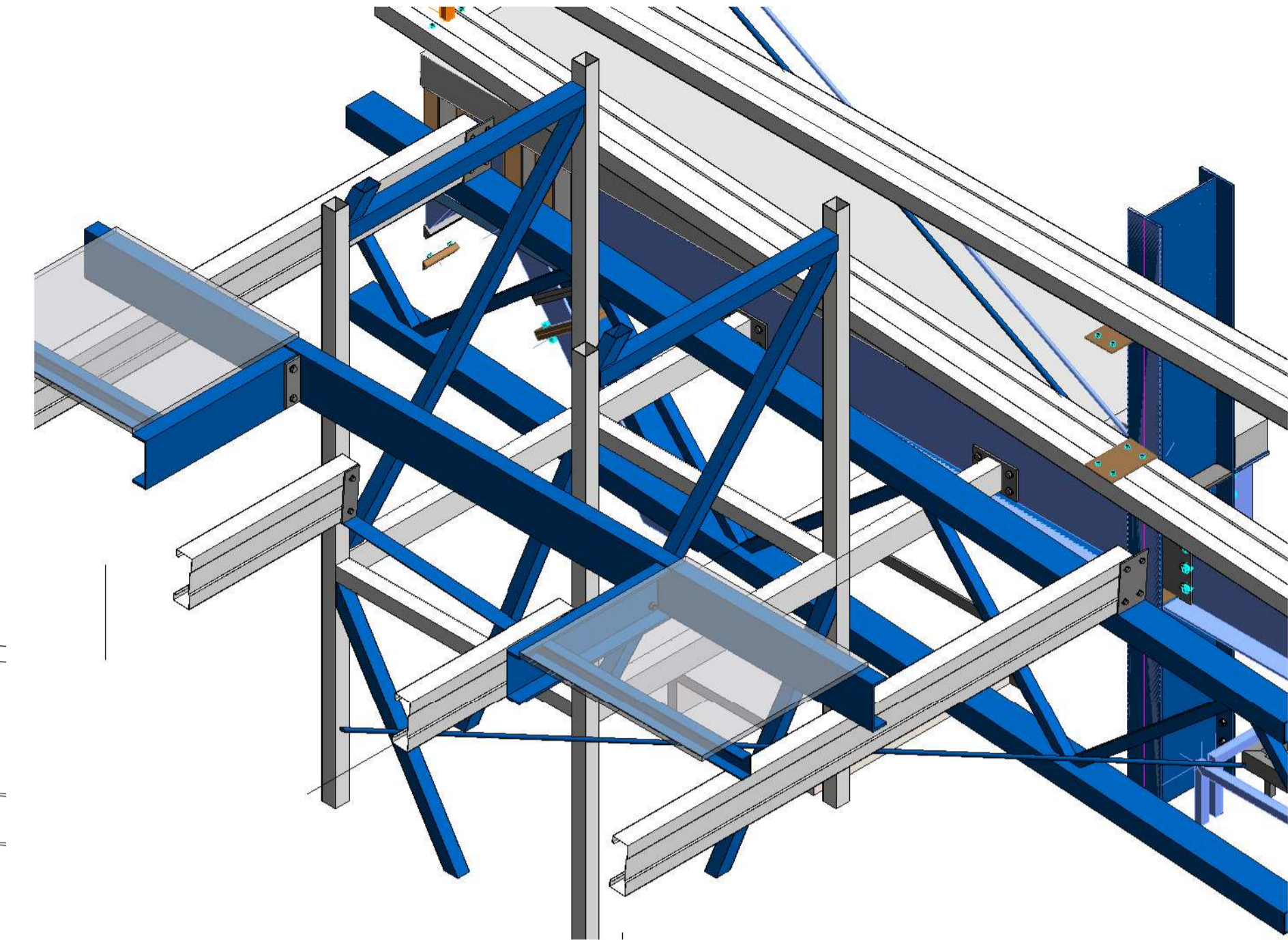


3 Duct frame Back Elevation1  
1:50

Rev#	Amendments	Date	SCALE	As indicated	JOB #
18	AHU-4 Platform and Ducting	7/7/17	As indicated		12412
DRAWN BY C. White			DATE	23/01/16	
CHECKED BY			Checker	18	
AHU 4 Ducting Frame				S1004	
Please note: All dimensions to be verified on site					
Paper size A1					

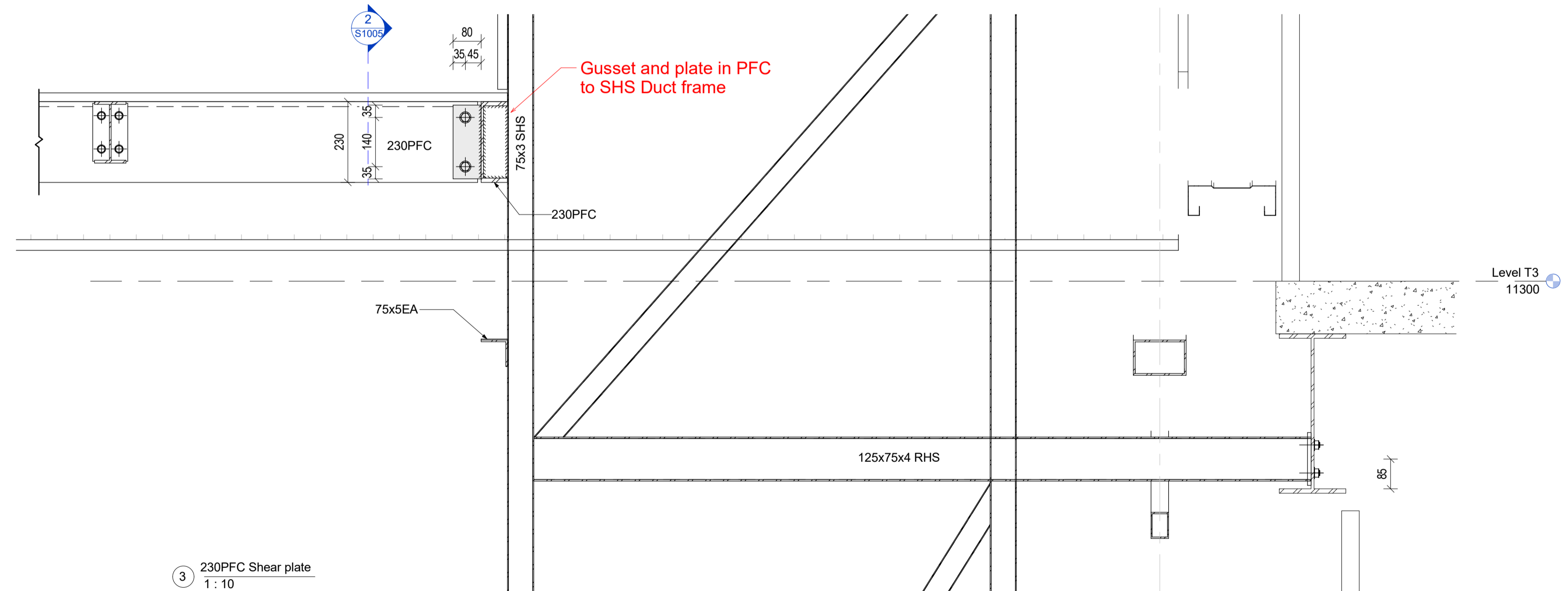


1 AHU 4 Frame to truss  
1:10

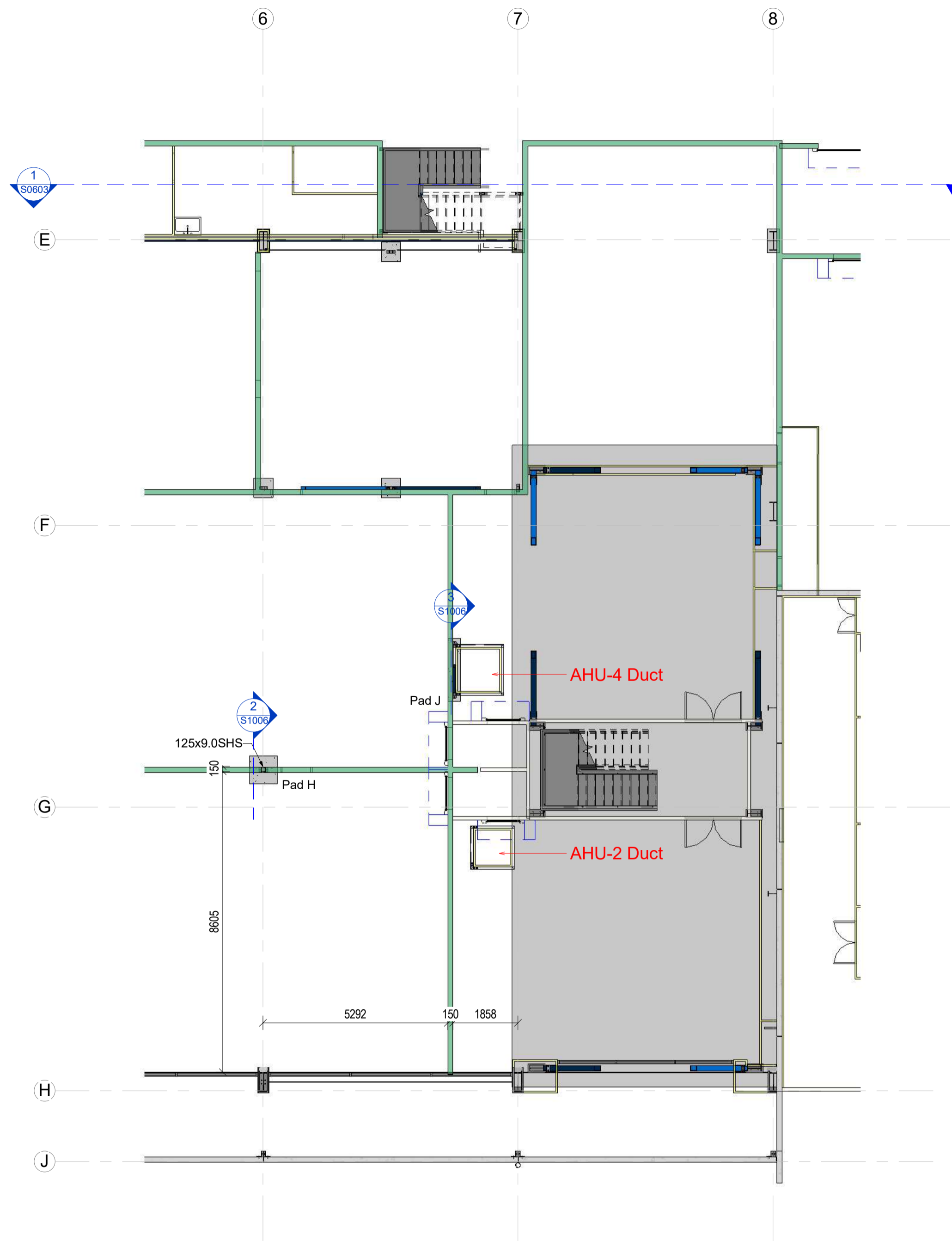


2 DETAIL :230PFC to Duct frame  
1:20

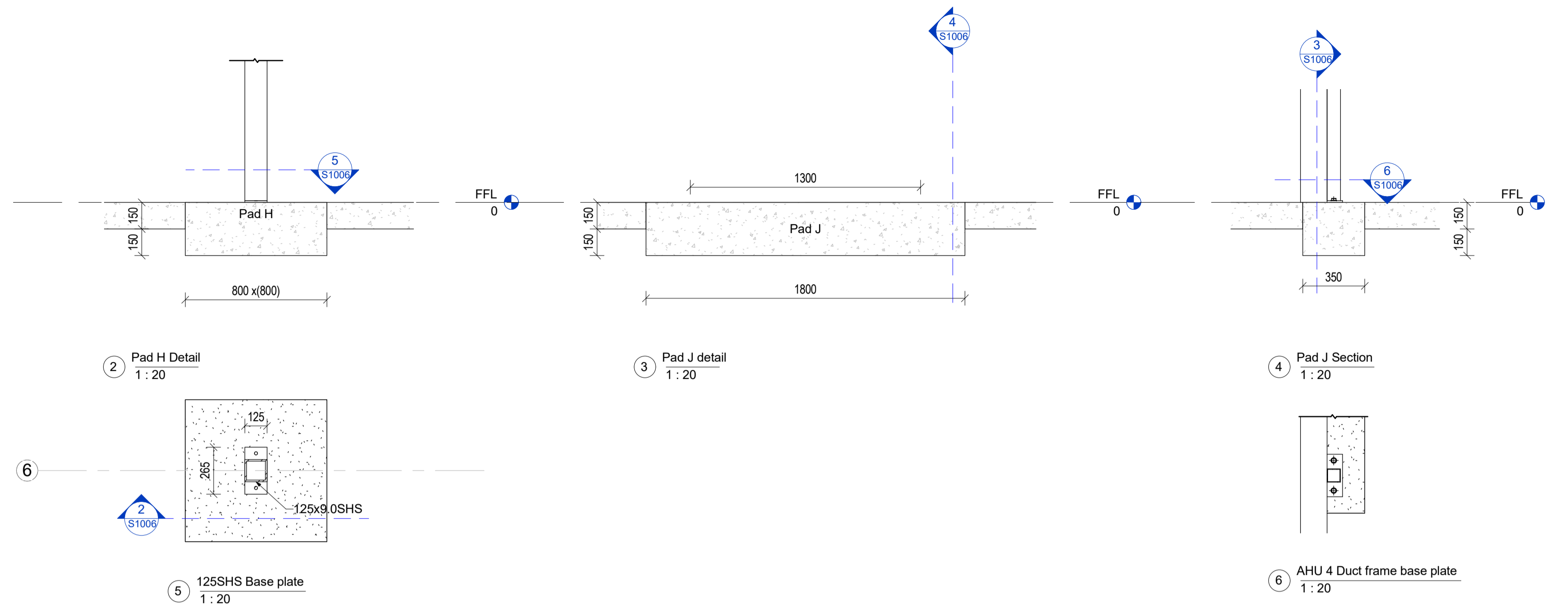
Cut Existing purlins and attach to new new purlin cleats on 75x5EA



3 230PFC Shear plate  
1:10



1 Floor Plan AHU4  
1:100



2 Pad H Detail  
1:20

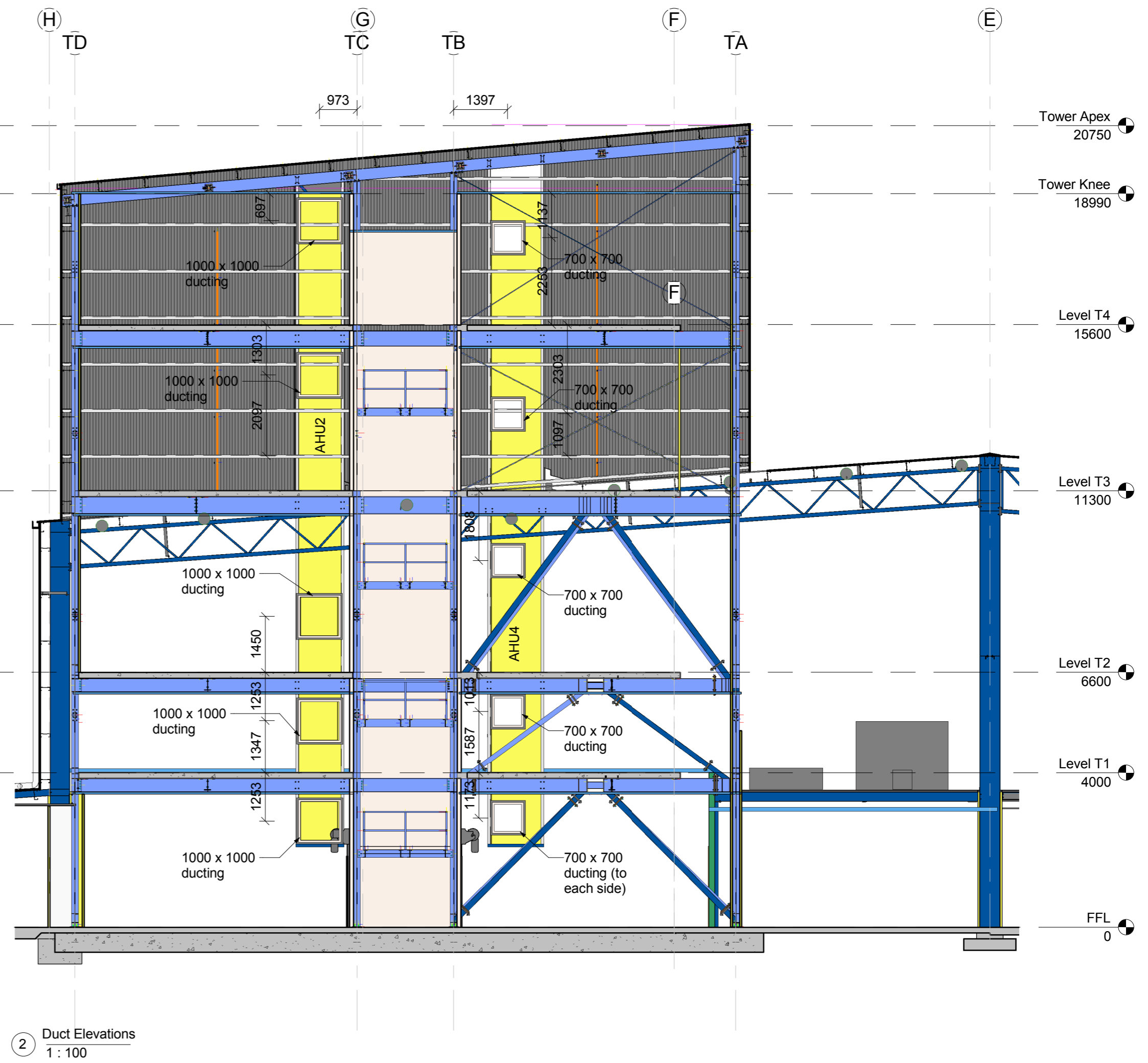
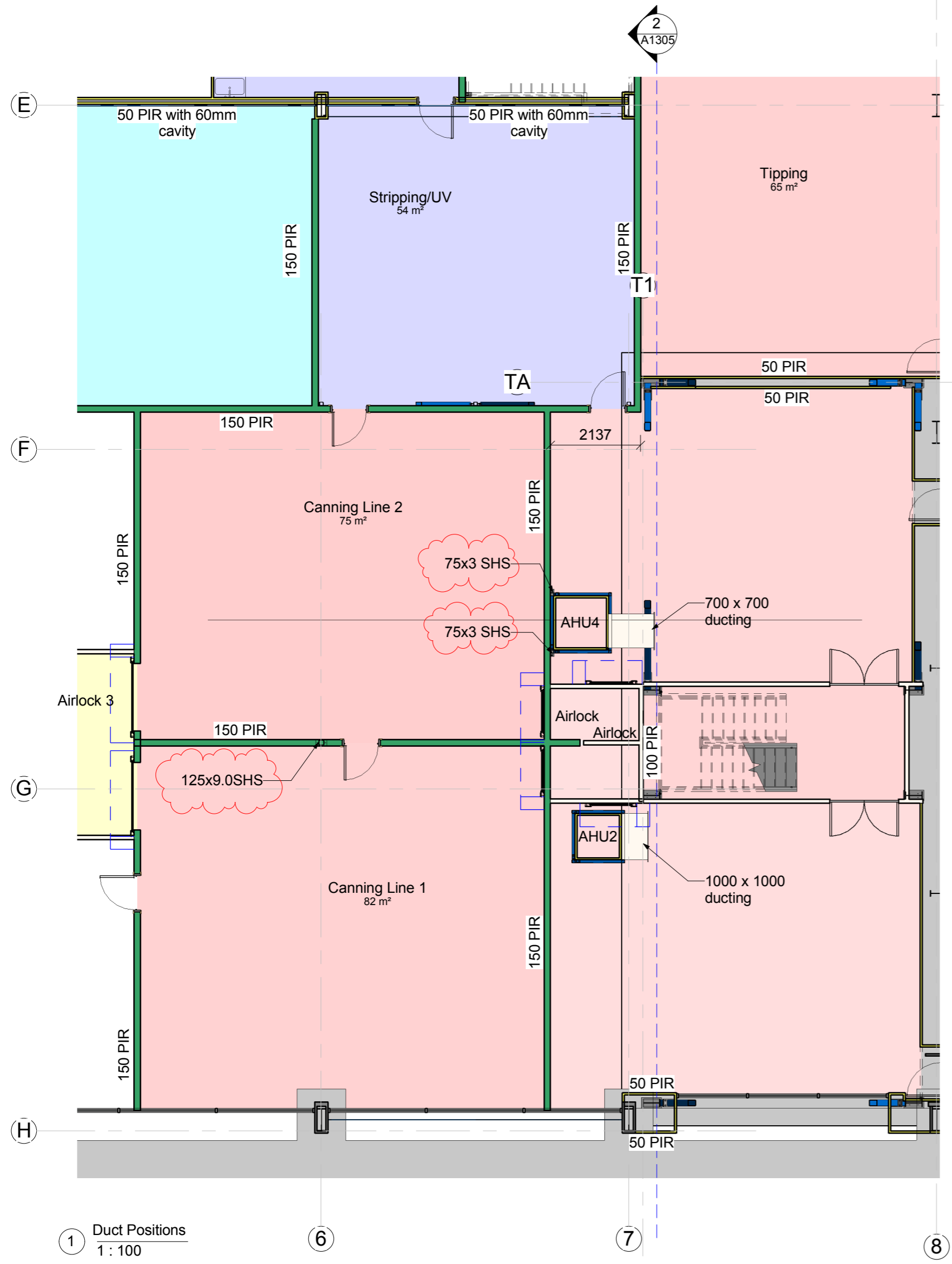
3 Pad J detail  
1:20

4 Pad J Section  
1:20

5 125SHS Base plate  
1:20

6 AHU 4 Duct frame base plate  
1:20

Rev#	Amendments	Date	SCALE	As indicated	JOB #
18	AHU-4 Platform and Ducting	7/7/17	As indicated		12412
DRAWN BY C. White			DATE	23/01/16	
CHECKED BY			Checker	18	
AHU-4 Floor plan and foundation details				S1006	
Please note, all dimensions to be verified on site					
Paper size A1					



PROJECT

NZ Dairy Collaborative Group  
Tower Extension

9 Ashford Ave, Ashburton

Rev#

Amendments

Date

SCALE 1 : 100 @ A2

JOB # 12630

5

AHU Platform and Stairs

20/03/16

DRAWN BY D. Shand

DATE 17/07/17

CHECKED BY

REV 5

Duct Positions

A1305

Please note: All dimensions to be verified on site

Paper size: A2